

Scone Wing

GLI-WGA

INSTALL AND MAINTENANCE MANUAL

WARNING

1. Read all instructions.
2. Install in accordance with national and local electrical code regulations.
3. This product is intended to be installed and serviced by a qualified, licensed electrician.
4. Turn off electrical power before installing or servicing luminaire in any way.
5. To reduce the risk of fire and overheating, make sure all connections are tight.



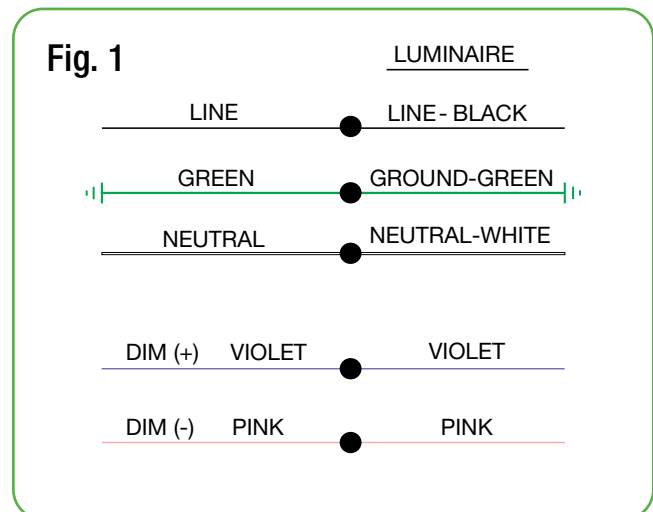
**May result in serious injury or death.
Turn power OFF at circuit breaker
prior to installation or servicing.**

CAUTION

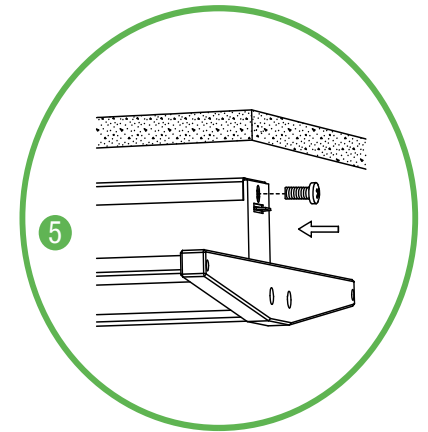
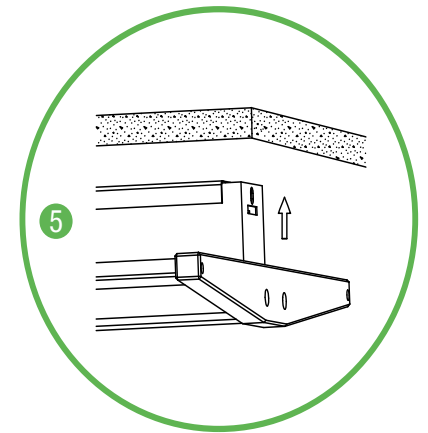
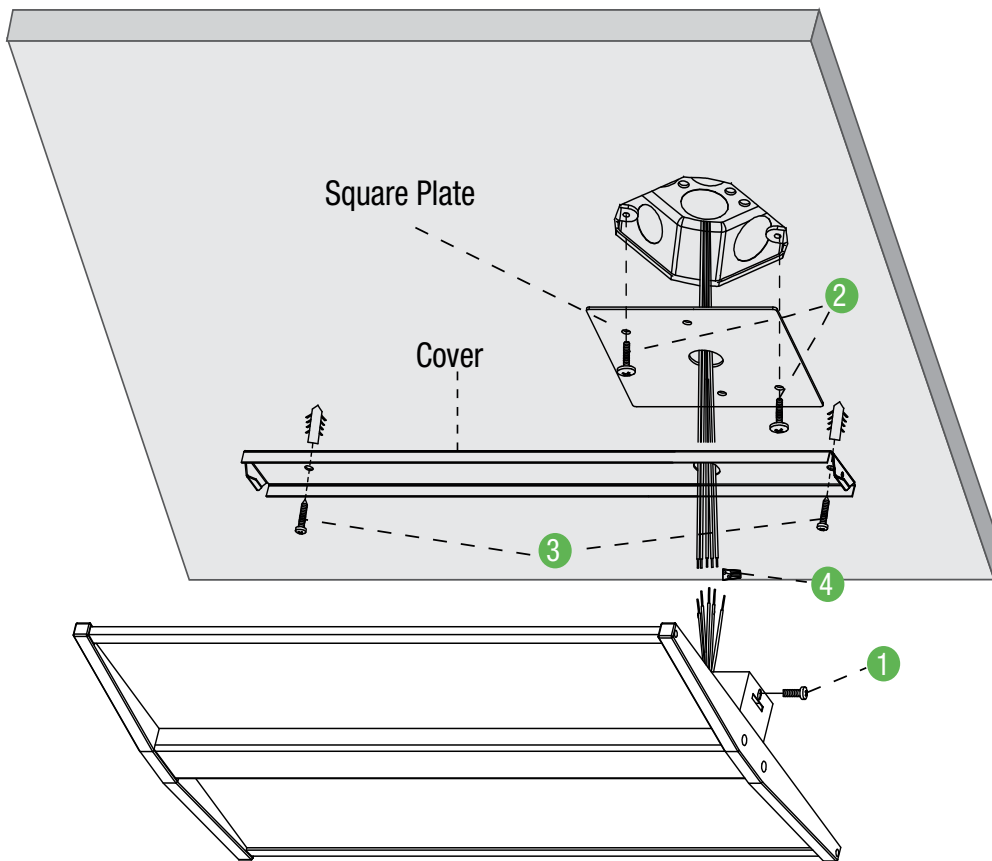
- Ensure the input voltage is compatible with the fixture to prevent damage.
- Carefully check for any signs of damage upon opening the package.
- Always switch off the breaker and verify that it is off before connecting the fixture to prevent electric shock.
- Make sure all electrical connections are tight to reduce the risk of fire and overheating.
- Installation, removal, and maintenance should be performed by qualified technical personnel
- Select suitable fasteners based on the surface and weight of the fixture to ensure secure installation.
- Do not install in wet locations. For dry and damp use only.
- Do not cover the lighting fixture with insulation or similar materials to prevent overheating.

WIRING DIAGRAM

See Fig. 1 for wiring connections.

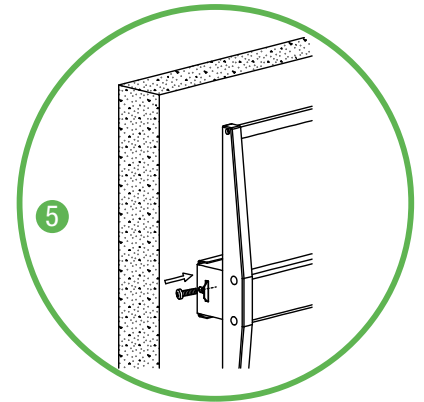
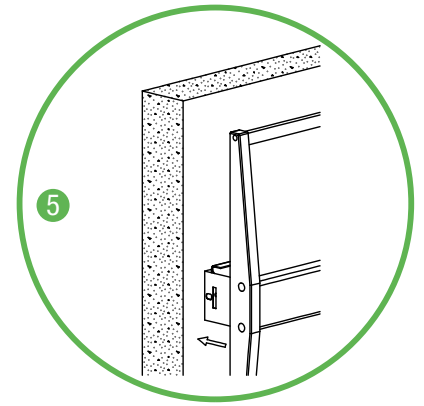
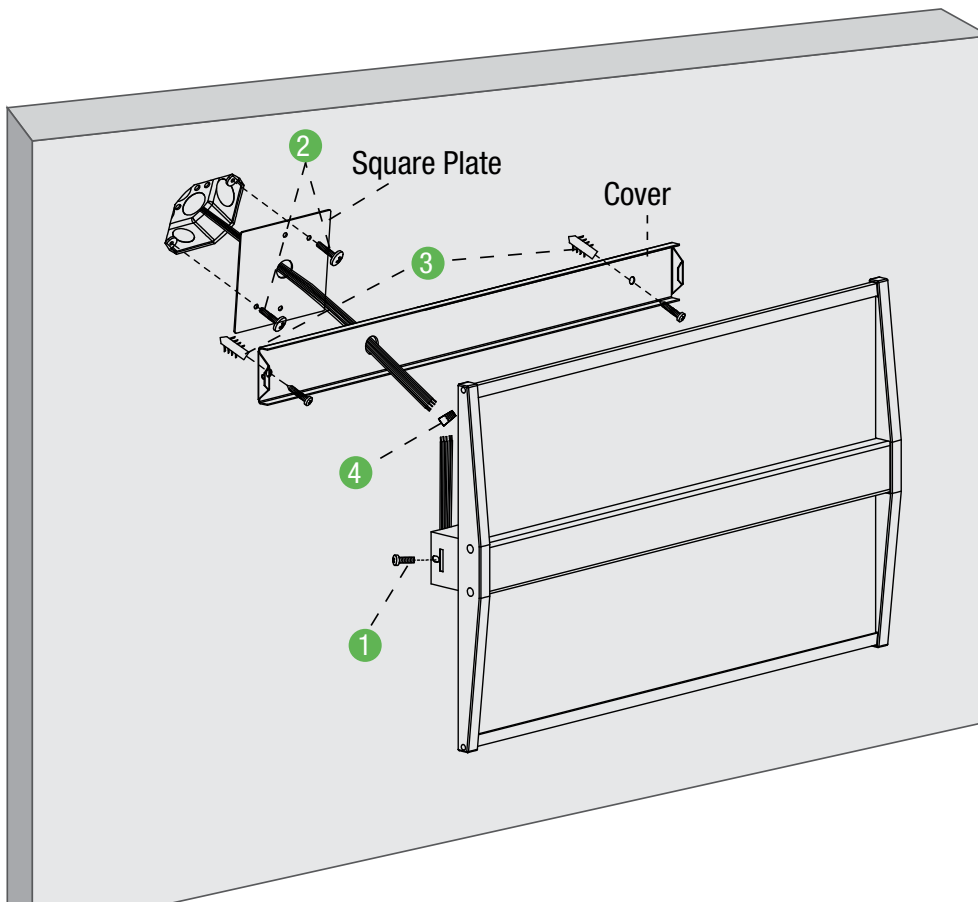


SURFACE CEILING INSTALLATION



1. Remove the luminaire cover by unscrewing the indicated screws on the sides.
2. Pull J-Box wiring through square plate and luminaire cover and mount square plate to J-Box
3. Secure luminaire cover to wall using appropriate fasteners
4. Wire fixture and tuck all wiring inside fixture.
5. Mount the luminaire onto the cover as indicated above.

SURFACE WALL INSTALLATION



1. Remove the luminaire cover by unscrewing the indicated screws on the sides.
2. Pull J-Box wiring through square plate and luminaire cover and mount square plate to J-Box
3. Secure luminaire cover to wall using appropriate fasteners
4. Wire fixture and tuck all wiring inside fixture.
5. Mount the luminaire onto the cover as indicated above.