

Junction Box Watt Select Downlight

Project: _____ Location: _____ Type: _____

Model Number: _____ Qty: _____ Notes: _____ Date: _____



GLI-JBDDL

Junction Box Watt Select Downlight

The GOLED Junction Box Watt Select Downlight is both aesthetically pleasing and highly utilitarian as a luminaire. It has been designed with considerations for speed and ease of installation, which in turn reduces build costs and saves energy, all while maintaining a premium interior design. The selectable wattage and CCT output feature allows for a single model to be used consistently throughout the project. Additionally, the light engine includes the wiring junction box, resulting in significant cost and time savings during installation.

Features and Specifications

- Aluminum housing acts as a heat sink, maximizing lifetime
- Spun aluminum reflector integrated with haze finish and white trim ring
- Integrated driver and junction box
- Spring clips facilitate quick installation and ensure flush fit with ceiling
- Available in multiple dimensions: 4", 6", 8", and 10"
- White or black finish
- Wattage select driver: 6/8/10/12/16W, 12/16/22/26/30W, 16/22/26/30/35W, 22/26/30/35/40W
- Standard output 100LM/W and high output 120LM/W
- 120V-277V and 120V-347V driver
- 0-10V dimmable
- Selectable color temperature: 2700K, 3000K, 3500K, 4000K and 5000K
- 80CRI+
- High power factor rating: ≥ 0.9
- Environmentally friendly: contains no mercury or other hazardous substances
- Emits no UV/IR light



Overview

Light source	LED
Watts (W)	16W, 30W, 35W, 40W
Voltage	120V-277V, 120V-347V
Lumen output (LM)	1600, 3000, 3500, 4000, 3600, 4200, 4800
Efficiency (LM/W)	100LM/W, 120LM/W
Color temperature (K)	2700K, 3000K, 3500K, 4000K 5000K
CRI	80CRI+

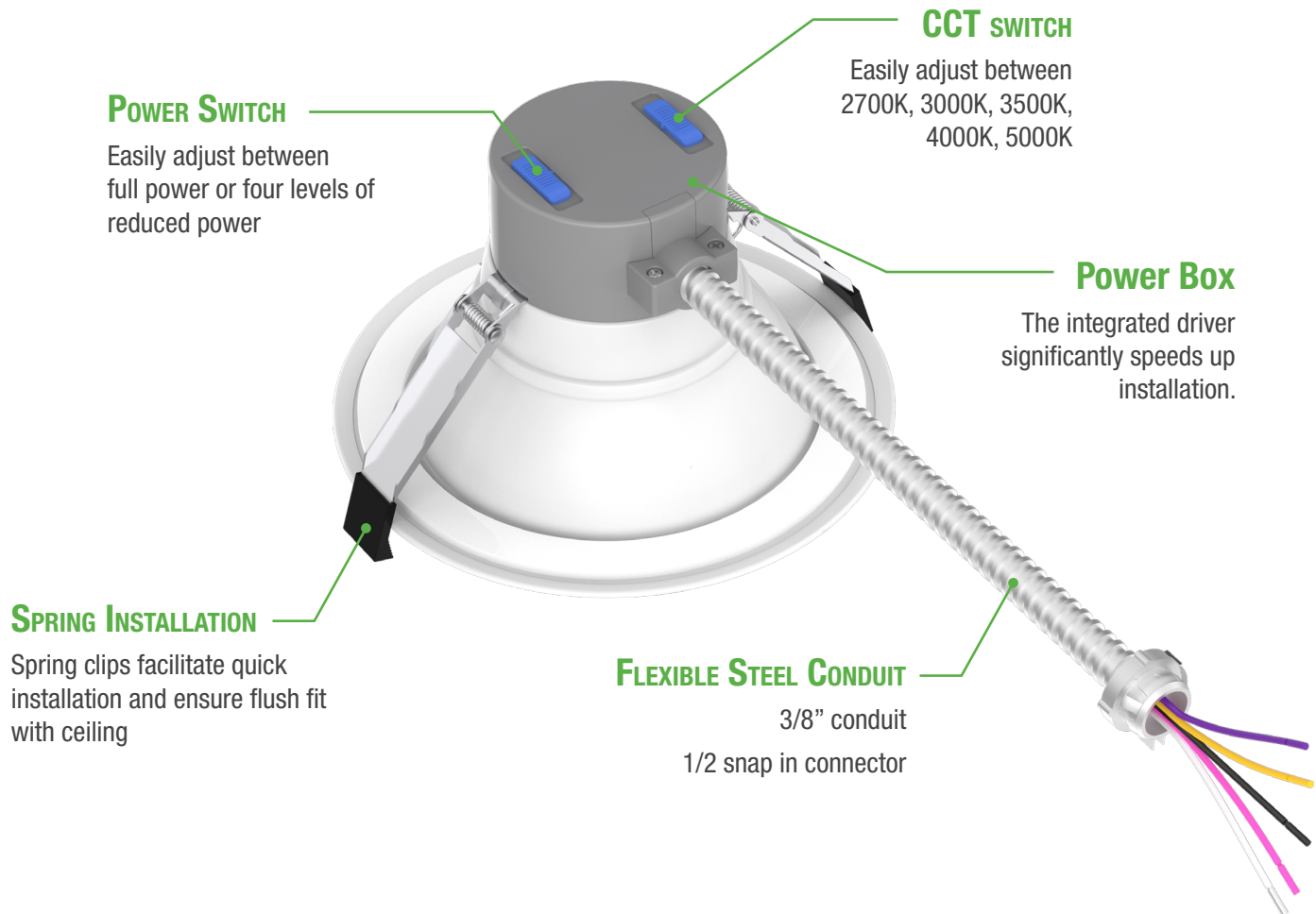
Certifications

- cULus Classified
- Wet location listed
- Insulated ceiling rated

Warranty

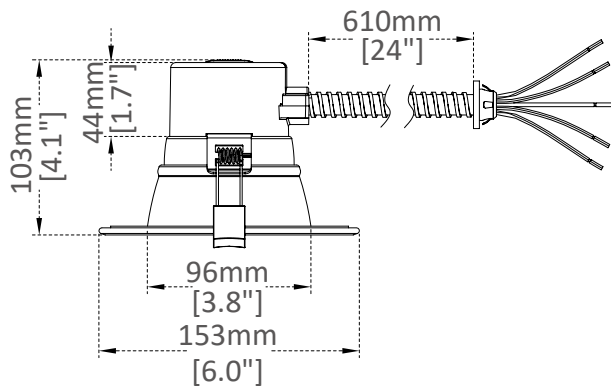
- 5 years warranty
- Lifespan of over 50 000 hours

Junction Box Watt Select Downlight

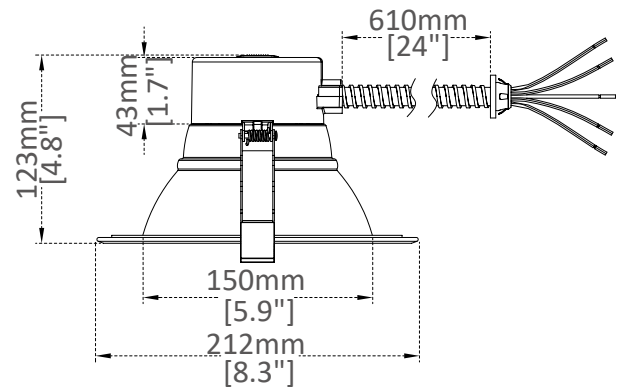


DIMENSIONS

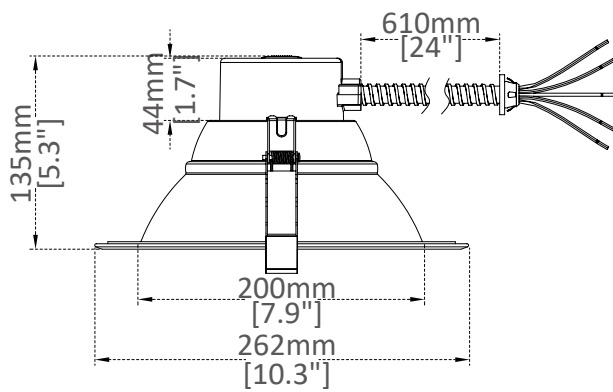
4 INCH



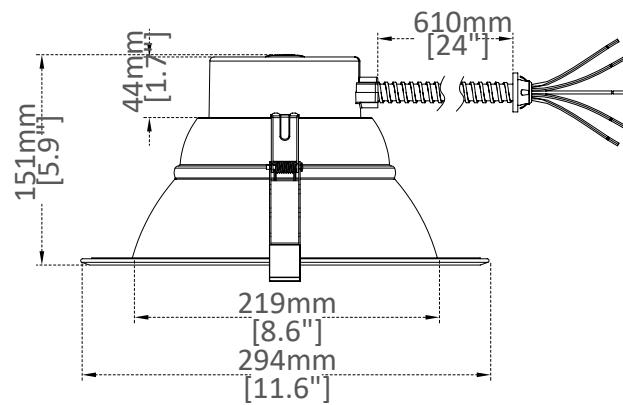
6 INCH



8 INCH

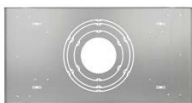




10 INCH



ACCESSORIES

ITEM	DESCRIPTION
	Goof ring 4in
	Goof ring 6in
	Goof ring 8in
	Goof ring 10in

ITEM	DESCRIPTION
	T-grid ceiling plate
	Joist ceiling plate
	Safety lanyard

Junction Box Watt Select Downlight

SPECIFICATIONS

CODE	DIAMETER	WATTAGE	LUMENS/WATT	LUMENS(5000K)	CCT	CRI	BEAM ANGLE
GLI-JBWDL-4-SO	4 inches	6/8/10/12/16W	100LM/W	600/800/1000/1200/1600LM	5CCT select 2700K 3000K 3500K 4000K 5000K	80CRI	80°
GLI-JBWDL-6-SO	6 inches	12/16/22/26/30W	100LM/W	1200/1600/2200/2600/3000LM		80CRI	80°
GLI-JBWDL-8-SO	8 inches	16/22/26/30/35W	100LM/W	1600/2200/2600/3000/3500LM		80CRI	90°
GLI-JBWDL-10-SO	10 inches	22/26/30/35/40W	100LM/W	2200/2600/3000/3500/4000LM		80CRI	90°
GLI-JBWDL-6-HO	6 inches	12/16/22/26/30W	120LM/W	1440/1920/2640/3120/3600LM		80CRI	80°
GLI-JBWDL-8-HO	8 inches	16/22/26/30/35W	120LM/W	1920/2640/3120/3600/4200LM		80CRI	90°
GLI-JBWDL-10-HO	10 inches	22/26/30/35/40W	120LM/W	2640/3120/3600/4200/4800LM		80CRI	90°

*Lumens may vary up to 5% from published

ORDERING GUIDE

SERIES	DIAMETER/WATTAGE	OUTPUT	VOLTAGE	FINISH	BATTERY BACK UP
GLI-JBWDL					
	4 - 4in 6/8/10/12/16W	SO - 100LM/W	V1 - 120-277V	WH - White	NB - No battery
	6 - 6in 12/16/22/26/30W		V2 - 120-347V	BK - Black	BB - Battery backup
	8 - 8in 16/22/26/30/35W			HZ - Haze	
	10 - 10in 22/26/30/35/40W				
	6 - 6in 12/16/22/26/30W	HO - 120LM/W			
	8 - 8in 16/22/26/30/35W				
	10 - 10in 22/26/30/35/40W				

ACCESSORIES

APPEND REQUIRED CODES

- G4** - Goof ring 4in
- G6** - Goof ring 6in
- G8** - Goof ring 8in
- G1** - Goof ring 10in
- TP** - T-grid ceiling plate
- JP** - Joist ceiling plate
- SL** - Safety lanyard