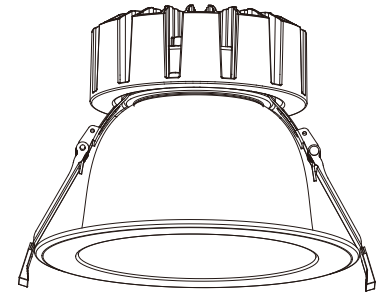


LED DOWNLIGHT USER GUIDE



LED DOWNLIGHT

Warning

- Read all product labels and instructions before installing fixture.
- INSTALLATION SHOULD ONLY BE PERFORMED AFTER POWER TO THE FIXTURE HAS BEEN DISCONNECTED.
- Risk of fire or electric shock. LED Retrofit Kit installation requires knowledge of luminaire electrical systems. Installation should be performed only by a qualified electrician in accordance with the National Electrical Code and relevant local code.
- Risk of fire or electric shock. Install this kit only in the luminaire that have the construction features and dimensions shown in the photographs and/or drawings.
- To prevent wiring damage or abrasion, do not expose wiring to edges of sheet metal or other sharp objects.
- Do not make or alter any open holes in an enclosure of wiring or electrical components during kit installation.
- The recessed luminaire is intended for mounting only in a covered ceiling where only the led side of the luminaire will be exposed to damp or dry locations.

Installation Instruction

Ceiling cutout table

Downlight Dia (inch)	4"	6"	8"	9.5"
Ceiling Cutout (inch)	4-5/16"~5-1/4"	6-5/16"~7-1/2"	8-1/16"~9-1/2"	8-7/8"~10-5/8"

Dimmer selection table: Before installation, please check the information of driver as below.

1-10V	Only work with 1-10V dimming system, dimming range 8-100%.
-------	--

Installation Procedure

WARNING

- 1.Switch off before installation.
- 2.Switch on only after complete installation and examination of the circuit.



Turn Off power supply before starting any installation. Read instructions & check you have all the tools & accessories to complete the installation correctly.

The light source contained in this luminaire shall only be replaced by the manufacturer or his service agent or a similar qualified person.

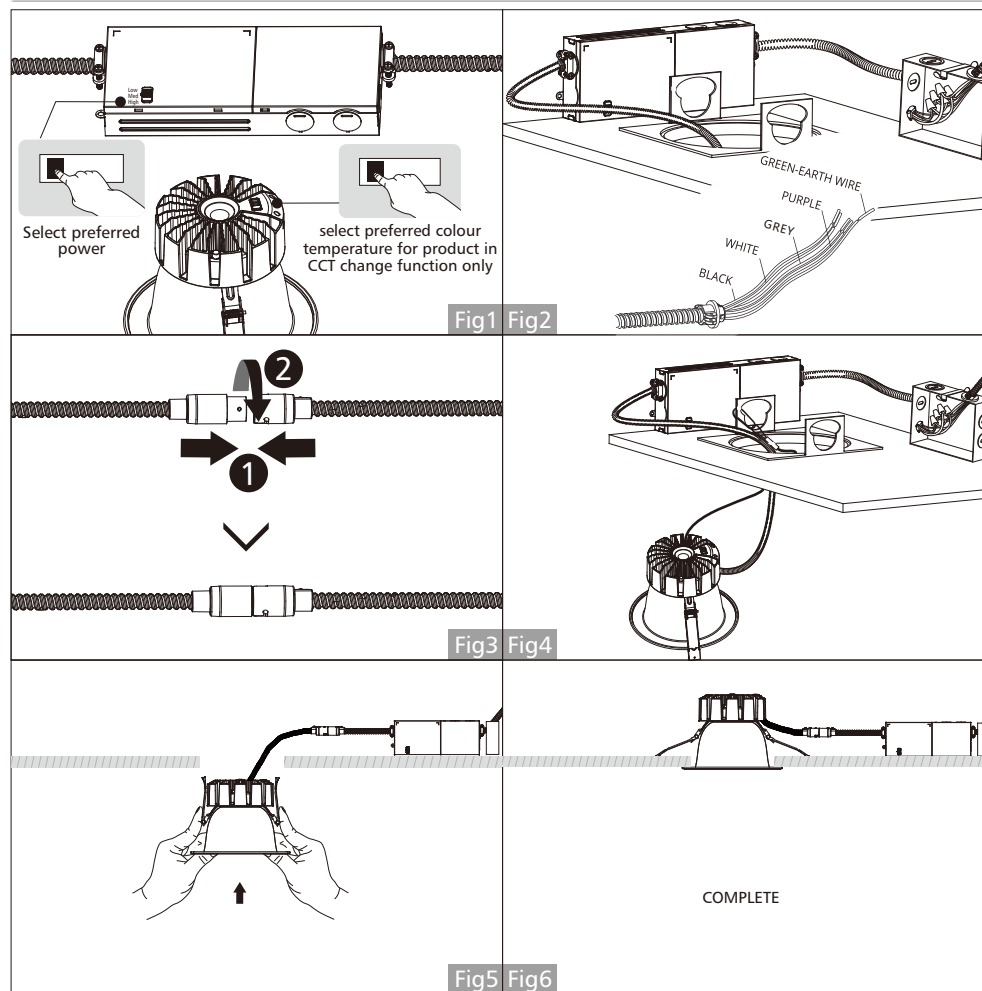
Retrofit installation

- 1.If existing lamp and trim are present, remove from ceiling or move it out of the way as it will not be needed during installation. Measure the ceiling opening to make sure the edge of the luminaire will cover the entire hole and still sit firmly in the ceiling before proceeding.
- 2.Open the existing J-box cover and cut away all wires connected to the ballast.
- 3.If using selected power driver or selected CCT luminaire, please adjust the lamp power to desired lumen output by slide switch on driver box.adjust CCT on the back of luminaire by slide switch.make sure the switch is never in between positions. (fig. 1).
- 4.Set the light engine driver box beside the housing frame. Allow it to rest on the ceiling or on the existing frame. make sure the driver is placed no farther than 1/2" from the reflector. Insert the open connection end into the existing J-box and wire to the power source (black to L, white to N, green to E). for dimming circuits, connect purple to '+' and grey to '-'. Reattach J-box cover (fig. 2).
- 5.Connect the driver box to the light engine by the attached quick connectors. make sure the cable collars are secure by inserting the pin into the L-shaped slot and turning until firmly in place (fig. 3).
- 6.Attach the safety rope to the existing fixture housing. (fig.4).

7.Squeeze the two reflectors clips so they are in an upright position and insert lamp into the ceiling. Once lamp is inside the ceiling, release the reflector clips and continue pushing lamp into the ceiling until securely fixed and flush with ceiling (fig.5&fig.6).

8.Restore power at the source and the installation is complete.

Retrofit installation



New construction installation with jbox

1. If using a new construction Plate, install it in the ceiling following its own installation instruction. (fig. 1)
- 2.If a new hole is needed, use a hole cutter, cut along the edge of the new construction plate prepared for the desired size (fig. 2).

- 3.If using selected power driver or selected CCT luminaire, please adjust the lamp power to desired lumen output by slide switch on driver box. adjust CCT on the back of luminaire by slide switch. Make sure the switch is never in between positions. (fig. 3).
- 4.Set the light engine driver box beside the housing frame. Allow it to rest on the ceiling or on the existing frame. make sure the driver is placed no farther than 1/2" from the reflector.Insert the open connection end into the existing J-box and wire to the power source (black to L, white to N, green to E). for dimming circuits, connect purple to '+' and grey to '-'. Reattach J-box cover (fig. 4).
- 5.Connect the driver box to the light engine by the attached quick connectors. make sure the cable collars are secure by inserting the pin into the L-shaped slot and turning until firmly in place (fig.5).
- 6.Attach the safety rope to the existing fixture housing.
- 7.Squeeze the two reflectors clips so they are in an upright position and insert lamp into the ceiling. Once lamp is inside the ceiling, release the reflector clips and continue pushing lamp into the ceiling until securely fixed and flush with ceiling (fig.6&fig.7).
- 8.Restore power at the source and the installation is complete.

■ New construction installation steps with jbox

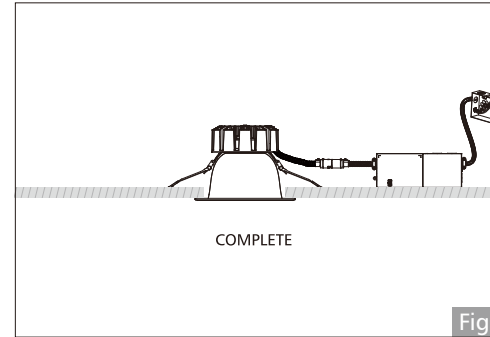
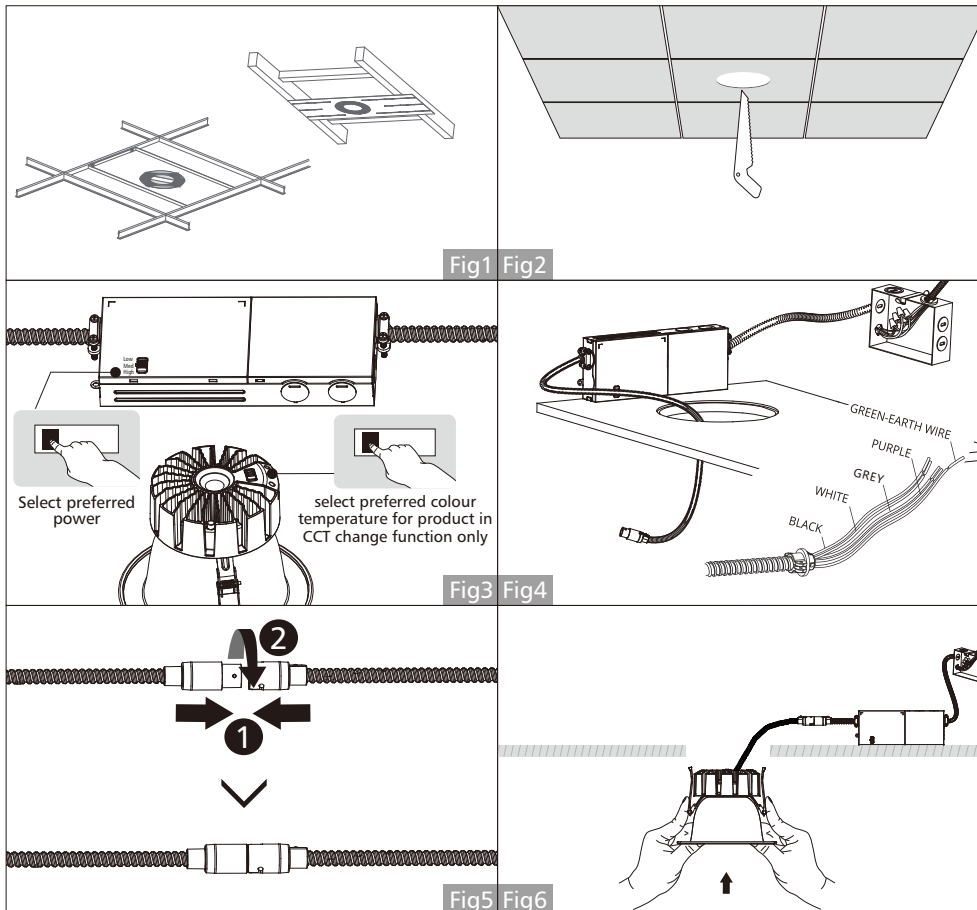


Fig7

■ New construction installation with using the driver box

1. If using a new Construction Plate, install it in the ceiling following its own installation instruction. (fig. 1)
2. If a new hole is needed, use a hole cutter, cut along the edge of the new construction plate prepared for the desired size (fig. 2).
3. If using selected power driver or selected CCT luminaire, please adjust the lamp power to desired lumen output by slide switch on driver box. adjust CCT on the back of luminaire by slide switch. Make sure the switch is never in between positions. (fig. 3).
4. Twist off the side screw, open the driver cover(fig.4), then press the connector and take out the black, white, green, grey and purple wires(fig.5).Through these wires into driver opening hole and connect them to the power source (black to L, white to N, green to E). For dimming circuits, connect purple to '+' and grey to '-'. Reattach J-box cover (fig. 6).
- 5.Set the light engine driver box beside the housing frame. Allow it to rest on the ceiling or on the existing frame. make sure the driver is placed no farther than 1/2" from the reflector(fig. 7).
- 6.Connect the driver box to the light engine by the attached quick connectors. Make sure the cable collars are secure by inserting the pin into the L-shaped slot and turning until firmly in place (fig.8).
- 7.Attach the safety rope to the existing fixture housing.
- 8.Squeeze the two reflectors clips so they are in an upright position and insert lamp into the ceiling. Once lamp is inside the ceiling, release the reflector clips and continue pushing lamp into the ceiling until securely fixed and flush with ceiling (fig.9 & fig.10).

■ New construction installation with using the driver box

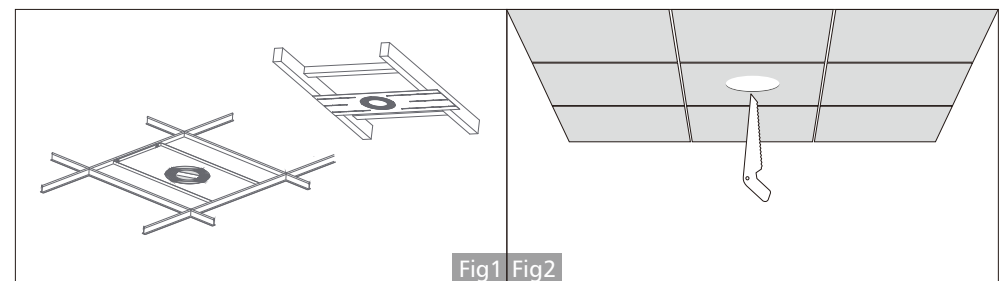


Fig1 Fig2

