

Bollard Light A

GLI-BLAA

INSTALLATION INSTRUCTIONS

WARNING

1. Read all instructions.
2. Install in accordance with national and local electrical code regulations.
3. This product is intended to be installed and serviced by a qualified, licensed electrician.
4. Turn off electrical power before installing or servicing fixture in any way.
5. To reduce the risk of fire and overheating, make sure all connections are tight.




May result in serious injury or death.
Turn power OFF at circuit breaker prior to installation or servicing.

Bollard Light A

ANCHOR INSTALLATION

- ! Bollard should be installed to a firm level surface
- ! Bollard base must be above grade, minimum recommended is 1 inch


 **Make sure to align the base template in the orientation that will result in the desired bollard fixture orientation (Fig. 1)**

NEW CONCRETE INSTALLATION:

1. Thread J-bolts into the base template (Fig. 2)
2. Install the base template with J-bolts with the new concrete pour

OTHER INSTALLATIONS

1. Using the base template, install three anchor bolts

 **Check that the anchor bolts are appropriate for the mounting surface and the forces they will be subjected to**

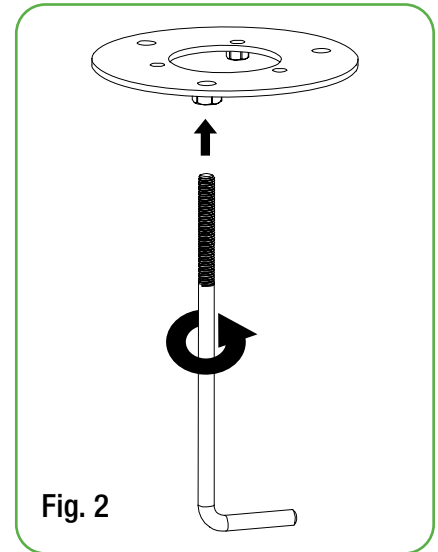
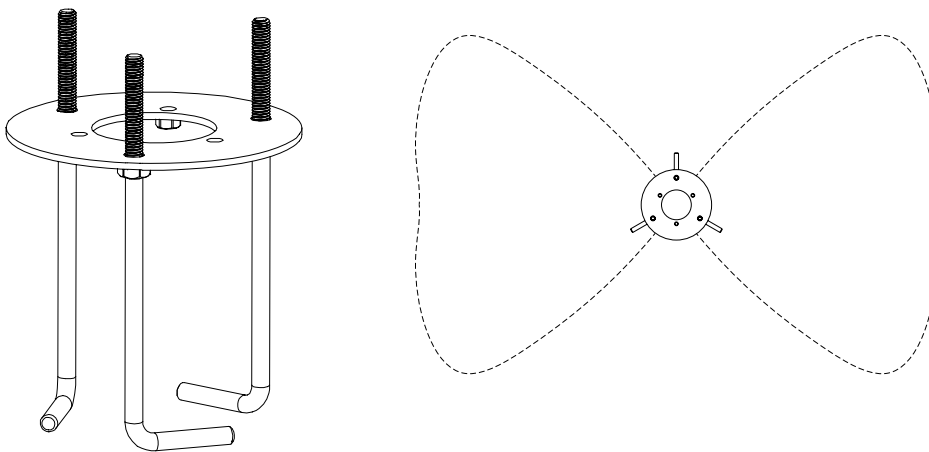


Fig. 1



Bollard Light A

BOLLARD INSTALLATION

1. Bollard light beam is perpendicular to the notch (Fig. 3 & Fig. 4)
2. Place the bollard base over the anchor bolts
3. Tighten the bollard base to the anchor bolts (Fig. 5)
4. Attach bollard head to bollard body using provided screws (Fig. 6)

Fig. 3

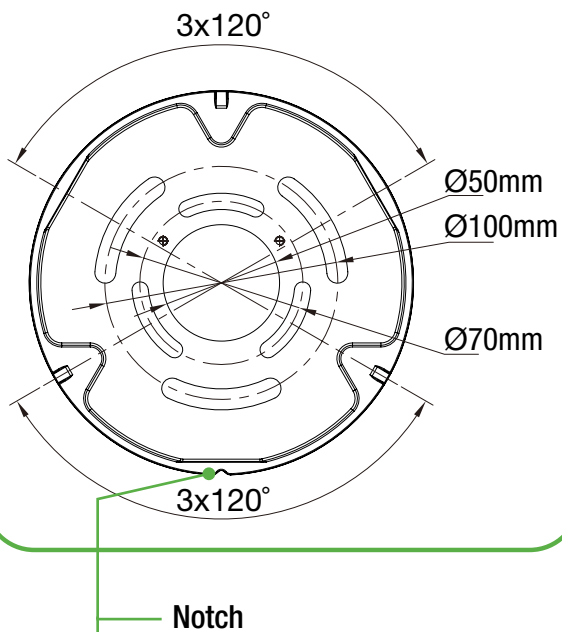


Fig. 4

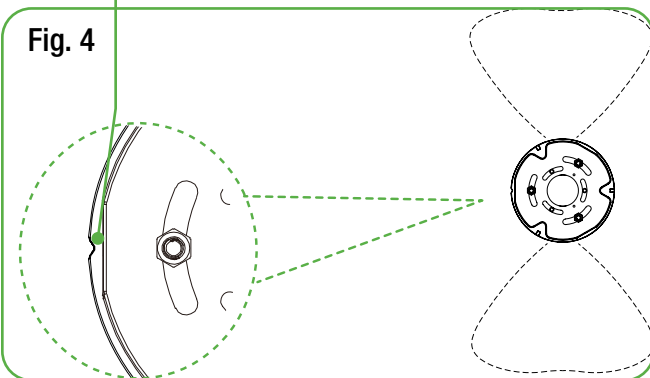


Fig. 5

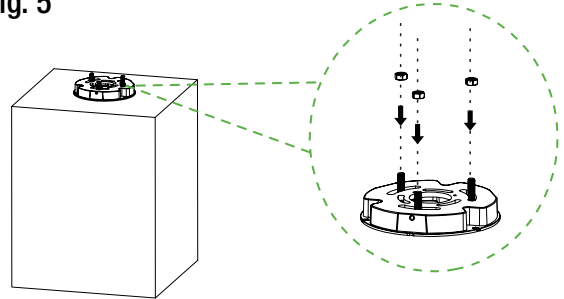
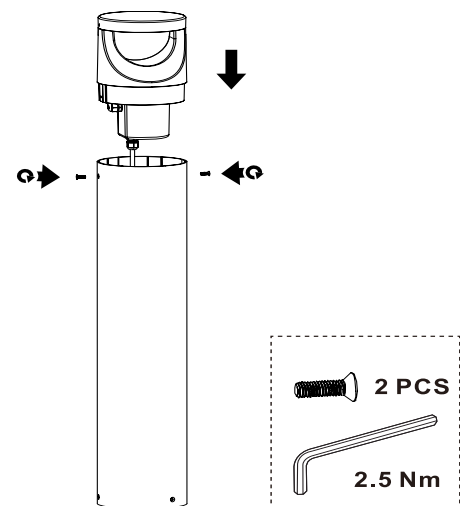


Fig. 6



Bollard Light A

BOLLARD INSTALLATION

5. If the optional wiring terminal box was purchased fasten it to bollard base
6. Wire the bollard according to the wiring diagram (Fig. 7)
7. Align bollard three screw holes with bollard base notch (Fig. 8)
8. Slide the bollard over on the bollard base and install screws (Fig. 9)

Fig. 7

LIGHT FIXTURE	
LINE	BROWN or BLACK
GROUND	GREEN
NEUTRAL	BLUE or WHITE
DIM (+)	VIOLET
DIM (-)	GREY or PINK

Fig. 8

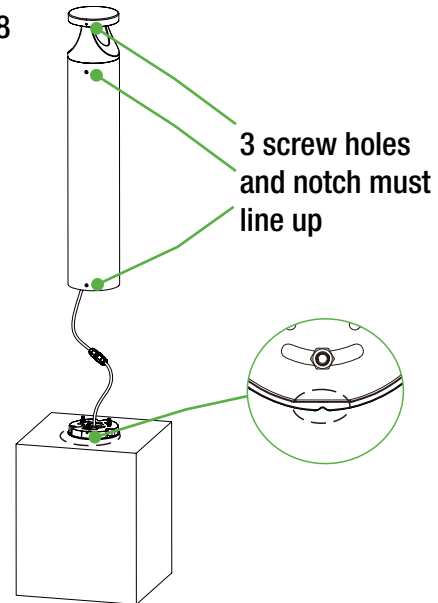


Fig. 9

